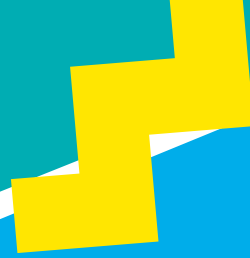




**YOUNG  
PEOPLE'S  
THEATRE**



**VISITING  
YPT**



# Introduction

Welcome to YPT's visual guide to our theatre. It is designed to help children understand more about what will happen when they come to see a play at YPT.

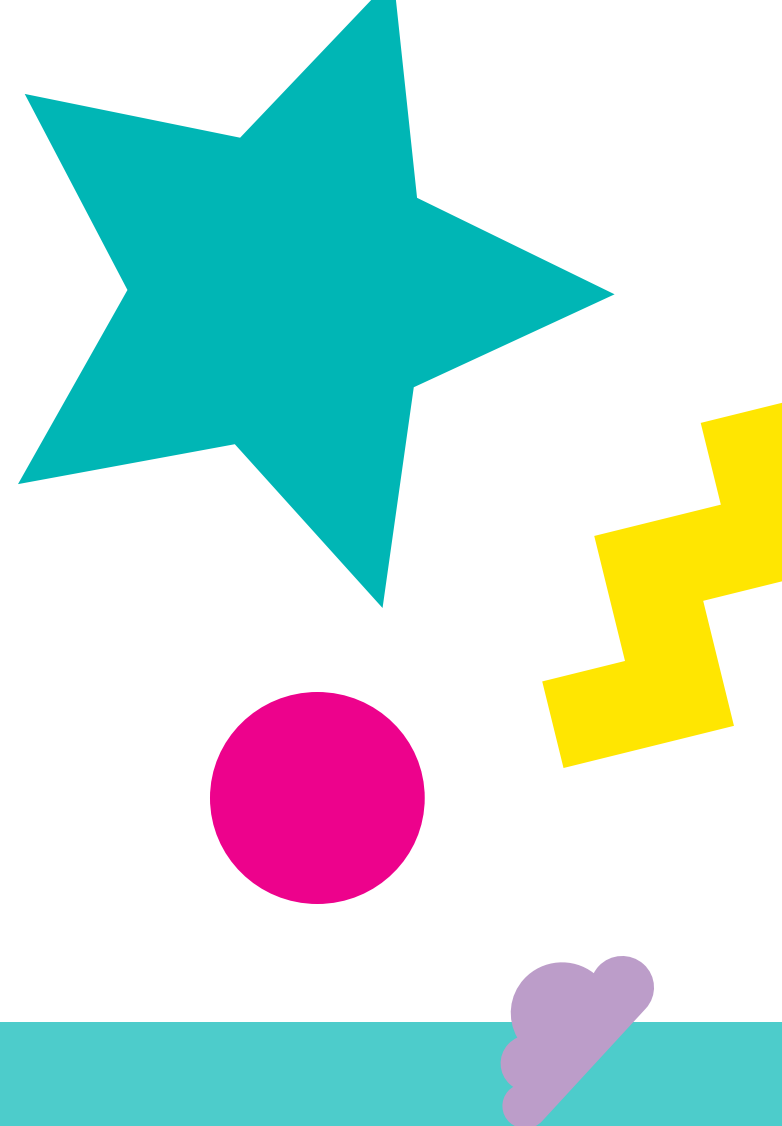
This guide is geared towards children with Autism Spectrum Disorder or anyone who may find the traditional theatergoing experience difficult. It also offers an excellent introduction for first-time theatergoers and helps to prepare children for the experience of seeing a play for the first time.

This guide will take you on a step-by-step journey through our theatre. Throughout, you will find questions and exercises for you and the child you are bringing, to explore together. There is also space at the back for children to share their thoughts on what they are looking forward to, as well as any questions or worries that they might have before coming for a visit.

You can also watch an accompanying video on our website and learn more about our relaxed performances that we offer throughout our season:

<http://www.youngpeopletheatre.ca/communities/relaxed-performances/>

For more information about accessibility services offered at YPT, please see the last page of this guide.



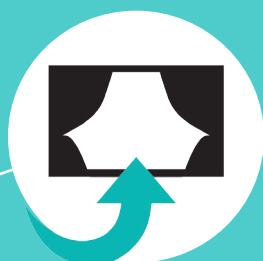
## Your Journey at YPT



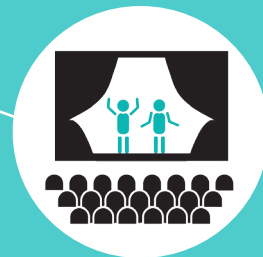
Arriving



Waiting



Entering



During the Play



After the Play



Next Visit





# Arriving at YPT

You can get to YPT by car, on foot or by using the TTC.

- YPT is located downtown in an old building on the corner of a busy street. You may see buses, cars and people on bikes or on foot when you arrive.
- You might arrive on a school bus with your teacher and classmates or you could be coming with your family or friends.
- You will probably see many other children and their teachers or parents.
- If you are with a large group, when you arrive an usher might greet you and ask you to wait outside.
- You will then enter the theatre through two large glass doors.
- If you require access to the wheelchair ramp, you will find it located just east of the main entrance of Young People's Theatre at 165 Front Street East.

## The front of the YPT building



Photo: Mark Seow

## A school bus parked outside the front of YPT



Photo: Aimee Bouchard

## Did you see or hear?

- A large YPT sign outside the theatre
- Traffic sounds on a busy road
- A school bus
- A pedestrian crossing
- The YPT van parked outside the theatre
- An usher wearing a black YPT sweatshirt and a headset
- Other children and their teachers or parents
- People talking and waiting in the lobby

## A school group waiting outside



## An usher at the YPT front doors



# Waiting to go into the theatre

- When you go through the front doors you will see display cabinets filled with props and costumes from different shows.
- On the left will be a large glass window. This is the Box Office. Inside the Box Office are sales associates who are there to help you. Your teacher or parent might speak to them to let them know you have arrived or to pick up tickets for your class or family.
- You might be asked to line up in front of the main staircase. Other people will be arriving and it may become busy, crowded and noisy.
- When it is time to go into the theatre the Front of House Manager will stand on the stairs, introduce themselves and go through some basic rules of what to do when inside the theatre.
- An usher will then lead you upstairs or you may take the elevator.



## Did you see or hear?

- A prop or costume on display
- A sales associate working in the Box Office
- A ticket to the show
- The Front of House Manager introducing themselves
- Ushers wearing headsets

**The display cabinets**



**The Box Office with sales associates inside**



**A school group waiting by the stairs**



**A Front of House Manager greeting an audience**



# Entering the theatre

In the theatre, people will sit beside, in front or behind you. There are 458 seats in the theatre and it may be loud as people find their seats. You may need to stand up to let people reach their seats in the same row.

- You will know the show is about to begin when you see someone standing by the front of the stage with a microphone. They will welcome you all to the theatre. If you are visiting with your school, this person will announce your school name. Often schools will clap or cheer when their school is mentioned.
- The show will then begin. The lights where you are sitting will get a little darker and the lights on the stage will get a little brighter. You might hear music or voices begin to speak. The audience will quiet down.



## Did you see or hear?

- Other audience members
- Music playing
- The stage
- Set pieces
- An usher helping someone find their seat
- The stage lights
- A technician getting ready for the show



**A member of YPT staff giving the pre-show speech**



**The stage**



**A full audience**





# Inside the theatre

At the top of the stairs, you will see two sets of doors entering into the theatre. An usher will lead you and your group through one of these sets of doors and show you where you will be sitting.

You will either be sitting in:

## The Orchestra



## The Mezzanine

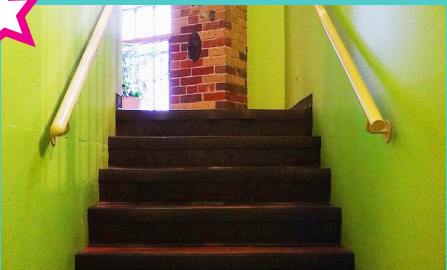


## The Balcony



If you are in the balcony, you will need to go up a separate staircase.

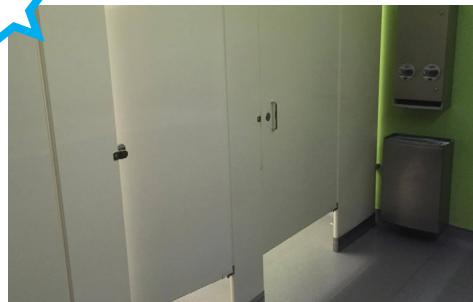
These stairs also lead to the Studio Theatre where YPT also has plays.



# Using the washroom

- You can use the washroom at any time during your visit to YPT. There are washrooms on the lower and upper floors.
- The toilets at YPT use automatic flushes. They sometimes will turn on when you are not expecting them to and this can be surprising.
- To use the tap, you place your hand underneath it and water will flow out.
- The hand dryer is also automatic and can be quite loud. This can be surprising.

## The washroom



## Hands under a tap with water flowing



## Somebody drying their hands



# During the play

- Each time you come to YPT you will likely be seeing a different production.
- During the play you will see and hear many different things.
- The actors play different characters.
- They wear costumes and use props.
- They perform on stage among different set pieces.
- Often there are special effects like smoke, haze or strobe lights.
- You will hear music and sound effects. These help to tell the story and help you use your imagination. If it is a musical, the actors will sing and dance to tell the story. They will also have microphones attached to themselves to help project their voices.
- The lights will also change colour, get brighter or dimmer. Sometimes it looks like a pattern or stencil is used to light the stage. These changes help show a new location or mood during the play.
- During the play you might see and hear things that surprise you or make you feel happy, sad, scared, angry or excited.



## Taking a break

It is fine if you need to take a break before or during the play. Ask a teacher or parent to come with you. You may take a long or short break. Take as long as you need. When you are ready to go back into the theatre an usher will help you find your seat again.

Photo Credits: 1. (L-R): Jeff Miller and Caroline Toal in *To Kill a Mockingbird* at YPT; Set & Costume Design by Dana Osborne, Lighting Design by Lesley Wilkinson. 2. (L-R): Mollie Corcora, Mike Spee, Auston James and Vickielee Wohlbach in *Goodnight Moon* at YPT; Costume Design by Catherine Hunt, Lighting Design by Rick Paulsen; Photo by Jeremie Andrew. 3. (L-R): The *Seussical*™ Cast in *Seussical*™ at YPT; Set Design by Judith Bowden, Costume Design by Charlotte Dean, Lighting Design by Jason Hand. 4. (L-R): Mishka Thebaud, Alejandra Simmons and Shelly Antony in *Scarberia* at YPT; Set and Costume Design by Joanna Yu, Lighting Design by Michelle Ramsay. All photos by Cylla von Tiedemann except where noted.



## After the play

- At the end of the play people will clap or cheer to show their appreciation. The actors will come on stage and take a bow.
- The lights will become brighter and a member of YPT staff will come on stage to talk about the play. Some of the actors will join them.
- The audience will be asked some questions and people will put up their hands to show they want to respond. If you would like to respond, you can also raise your hand.
- The audience will then be invited to ask questions about the play. Not everyone will get a turn to ask their question but you can always ask a member of staff when you leave the theatre or write a letter to YPT after your visit.
- After the Q&A it will be time to leave the theatre. You might have to wait in your seat until there is enough room to walk up the stairs. It might be loud as people get up, put on their coats and talk about the play.

**Write down your questions about the show:**

---

---

---

---



## Did you see or hear?

- People clapping and cheering
- Actors taking a bow
- People raising their hands to ask questions
- The audience preparing to leave the theatre
- The photo display of the cast & crew
- A show poster

## YPT actor on stage answering questions



Pictured (L-R): Lois Adamson, Interim Artistic Associate, Education (YPT), Ginette Mohr, Heather Marie Annis and Hillary Carroll at a post-show Q&A for *Emily's Piano* (YPT, 2015); Costume Design by Laura Gardner; Set and Lighting Design by Beth Kates | Photo from video by Nicholas Bradford-Ewart.







# Accessibility

## Notes for parents, caregivers and teachers.

YPT endeavours to be accessible to all patrons. However, limitations imposed upon us by building design mean we cannot provide all the services we would like. We are working on methods to better serve patrons with all manner of disabilities and special needs.



Both performance spaces at YPT offer limited wheelchair seating. If you use a **wheelchair or other mobility device**, an usher will be on hand to help you into the theatre. Wheelchair spaces in the theatre can be booked by phone. Please call 416.862.2222 for more information and to make arrangements in advance of your visit.

If you are seeing a show in the Mainstage you will go through **this side door**



You are now in **the green room** where you will enter the theatre through another side door.



If you are seeing a show in our Studio Theatre, an usher will escort you using our elevator. They will operate the elevator with a key and you will enter the Studio Theatre from the backstage door.



**Support Persons** who accompany a person with a disability will receive a complimentary ticket.



**Service animals** are welcome at our theatre – please let Box Office know ahead of your visit if you will be accompanied by a Support Person or if you plan on bringing an assistance animal to the theatre.



**Assistive listening devices** (headphones) are available on loan for any YPT production on a first-come, first-served basis. To reserve, please contact the box office at 416.862.2222 or via email at [boxoffice@youngpeoplestheatre.ca](mailto:boxoffice@youngpeoplestheatre.ca) at least **24 hours prior** to the event. You may also speak to our Box Office staff on arrival.

Find out more about all accessibility services offered at YPT by visiting:

[www.youngpeoplestheatre.ca/about-ypt/accessibility/](http://www.youngpeoplestheatre.ca/about-ypt/accessibility/)

Interpreted Performances



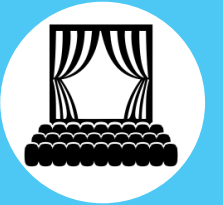
Relaxed Performances

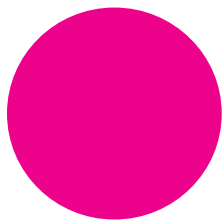
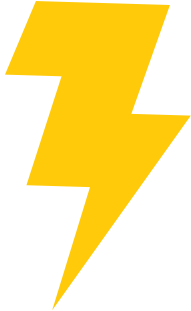


Subsidized Tickets



Meet the Theatre







ALLEN MACINNIS  
Artistic Director

NANCY J. WEBSTER  
Executive Director

SEASON PRESENTING PARTNER **BMO**

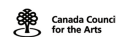
WRITTEN BY HANNA WOLF  
ILLUSTRATION & LAYOUT DESIGN BY MARIYA MOROSOVSKA  
ALL PHOTOS BY ALI SULTANI, UNLESS NOTED OTHERWISE.

**CALL OR CLICK: 416.862.2222 x2**  
**YOUNGPEOPLESTHEATRE.CA**  
**165 FRONT STREET EAST, TORONTO M5A 3Z4**

ADA SLAIGHT  
EDUCATION CENTRE  
AT YPT

**THE  
SLAIGHT  
FAMILY  
FOUNDATION**

GOVERNMENT PARTNERS



Conseil des Arts  
du Canada



ONTARIO ARTS COUNCIL  
CONSEIL DES ARTS DE L'ONTARIO  
le conseil gouvernemental agencé  
du ministère du Patrimoine de l'Ontario



TORONTO  
ARTS  
COUNCIL

FUNDED BY  
THE CITY OF  
TORONTO



SEATS FOR EVERY KID



EMERGING ARTISTS



RBC Foundation

ACCESSIBILITY PARTNERS



TIPPET  
FOUNDATION

ARTS IMPACT



MEDIA PARTNER



STRONGER COMMUNITIES TOGETHER™